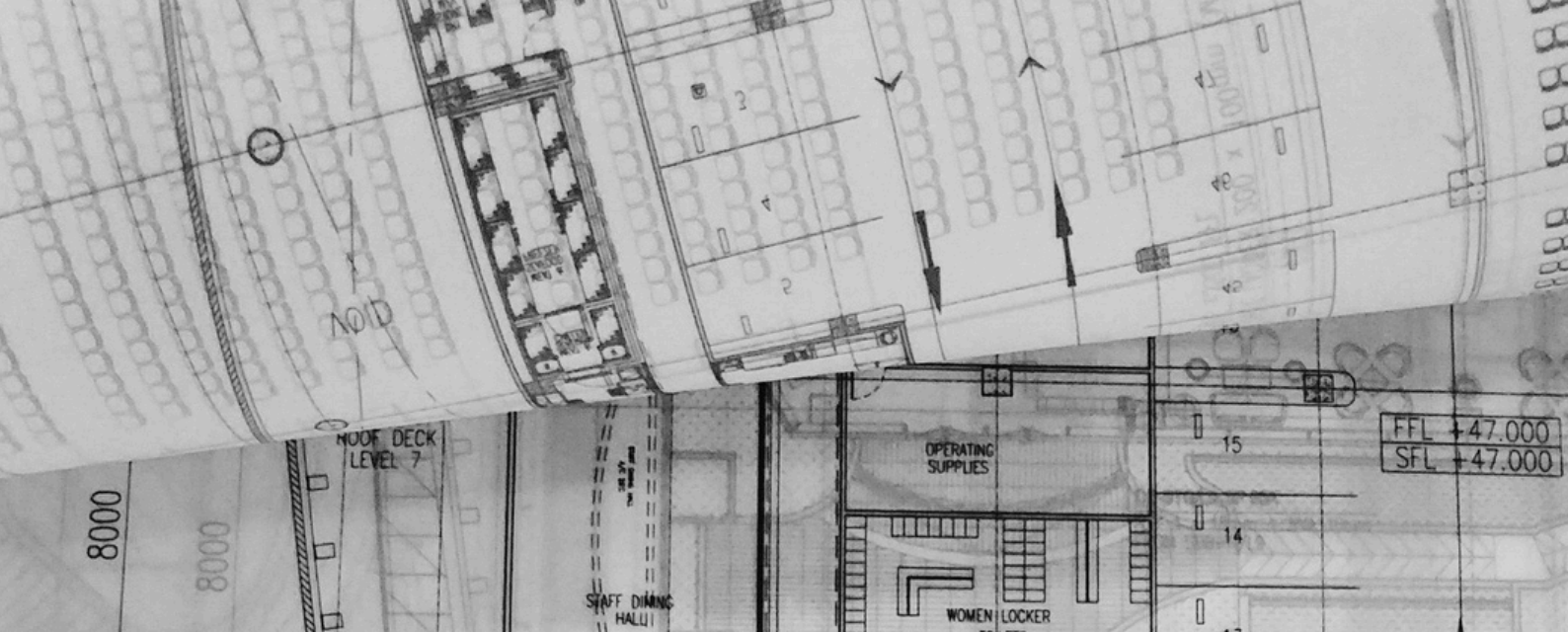




# Pressure Leaf **FILTER LEAVES**



**High-Efficiency Filtration**  
**Better performance and lower**  
**operating and maintenance costs.**

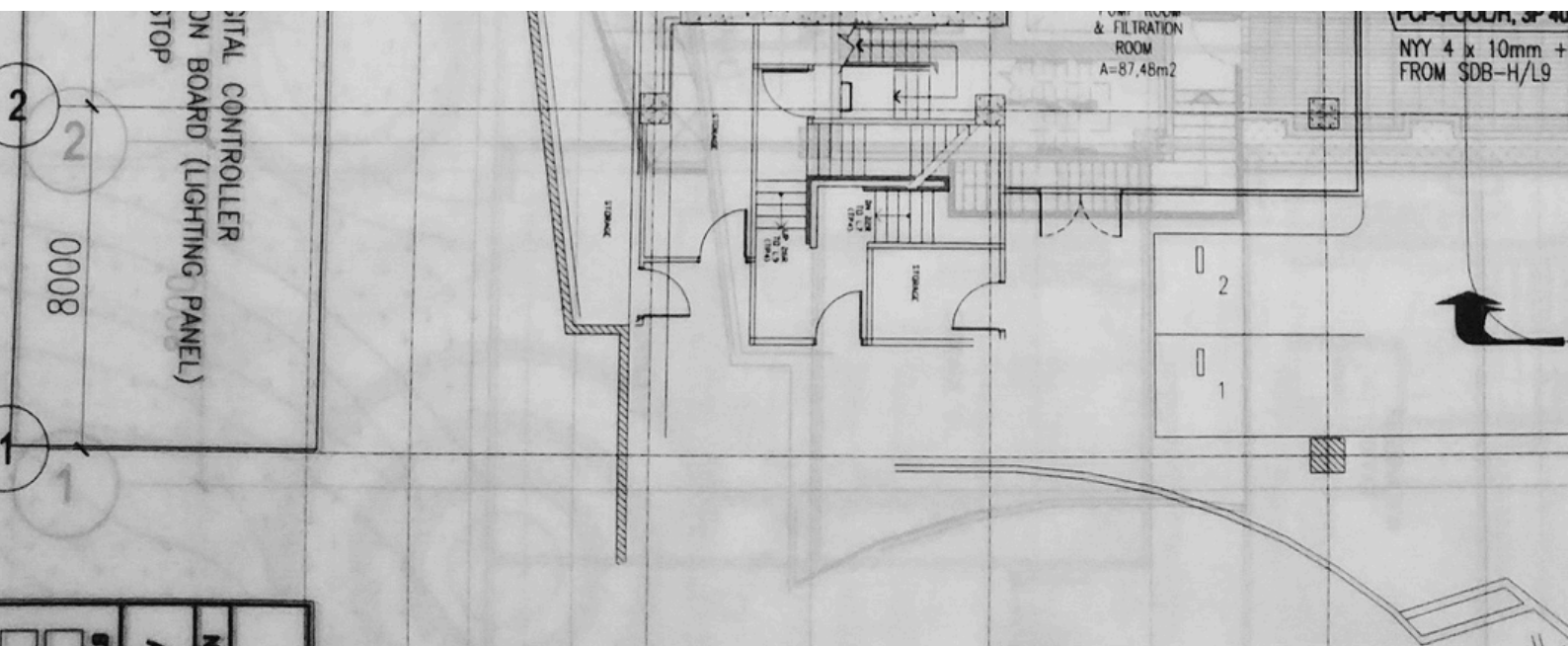


At Sulphurnet, we focus on delivering tailored solutions for diverse chemical processes. Our skills in process engineering and filtration enable us to provide a comprehensive design package, all in one place. We manage every phase of your project, from Basic Process Design to complete production units, including after-sales support.

If you need innovative solutions, Sulphurnet is ready to assist. Our team is dedicated to exploring new possibilities, designing custom made solutions, and achieving effective results. With our thoughtful approach, we aim to turn your challenges into successes.

Choose Sulphurnet for expertise and customized solutions that enhance efficiency and performance in your chemical processes.

**Sulphurnet –Get it right the first time**



# **Engineered for Excellence, Built to Last**

**Advanced Multi-Layer Design** **1**

**Key Characteristics** **2**

**Material Options** **3**

**Why Choose Sulphurnet Filter Leaves?** **4**

**Custom solutions** **5**



# Filter Leaves

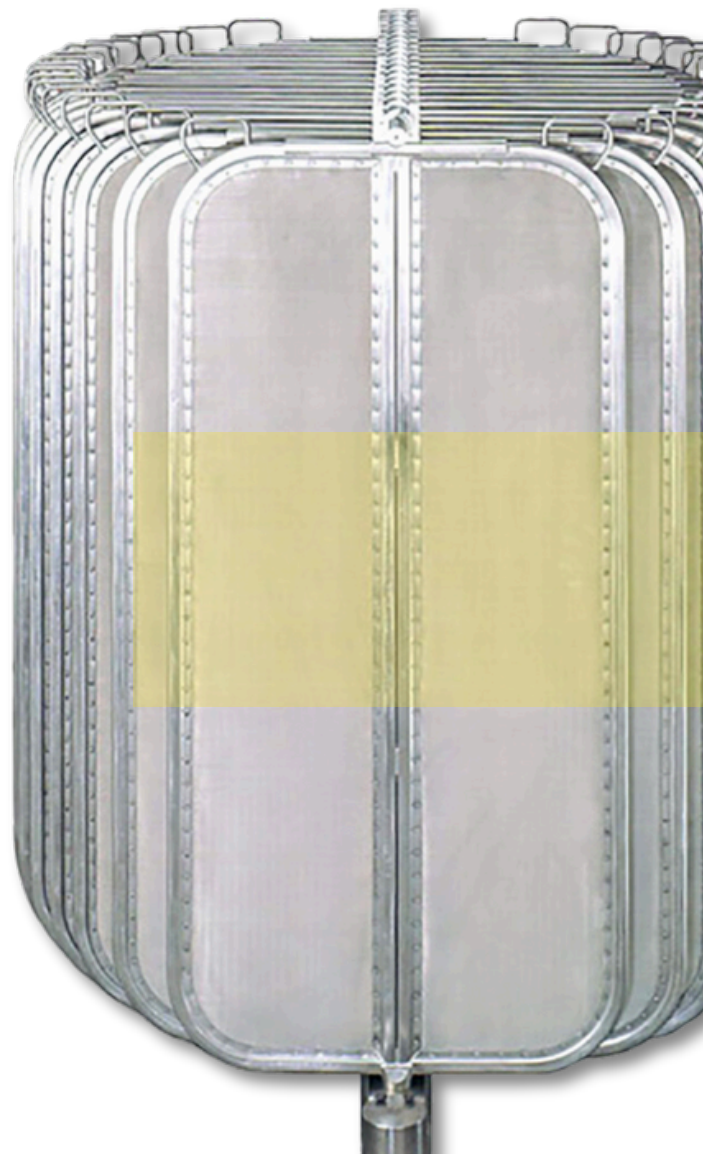
Our Filter leaves are engineered to deliver exceptional performance, durability, and chemical compatibility across various applications. Our filter leaves feature a sophisticated multi-layer design, ensuring mechanical strength and optimal moisture retention in cake filters.

## Advanced Multi-Layer Design

Each Sulphurnet filter leaf is composed of multiple layers, meticulously designed to serve specific functions:

- **Layered Configuration:** Our standard design includes five layers, with the middle layers being thicker to facilitate unrestricted filtrate flow and enhance drainage and filtration.

- **Versatile Frames:** Frames can vary in thickness and may include reinforcements if needed. Depending on client preferences, the mesh can be either riveted or bolted to the frame.





# Key Characteristics

**Robust and Durable:** Rigid construction ensures a long lifespan.

**Customizable:** Designs can be tailored to your specific needs.

**Efficient:** Achieves a fast filtration rate with ample drainage area.

**Flexible Construction:** Available in riveted or bolted options.

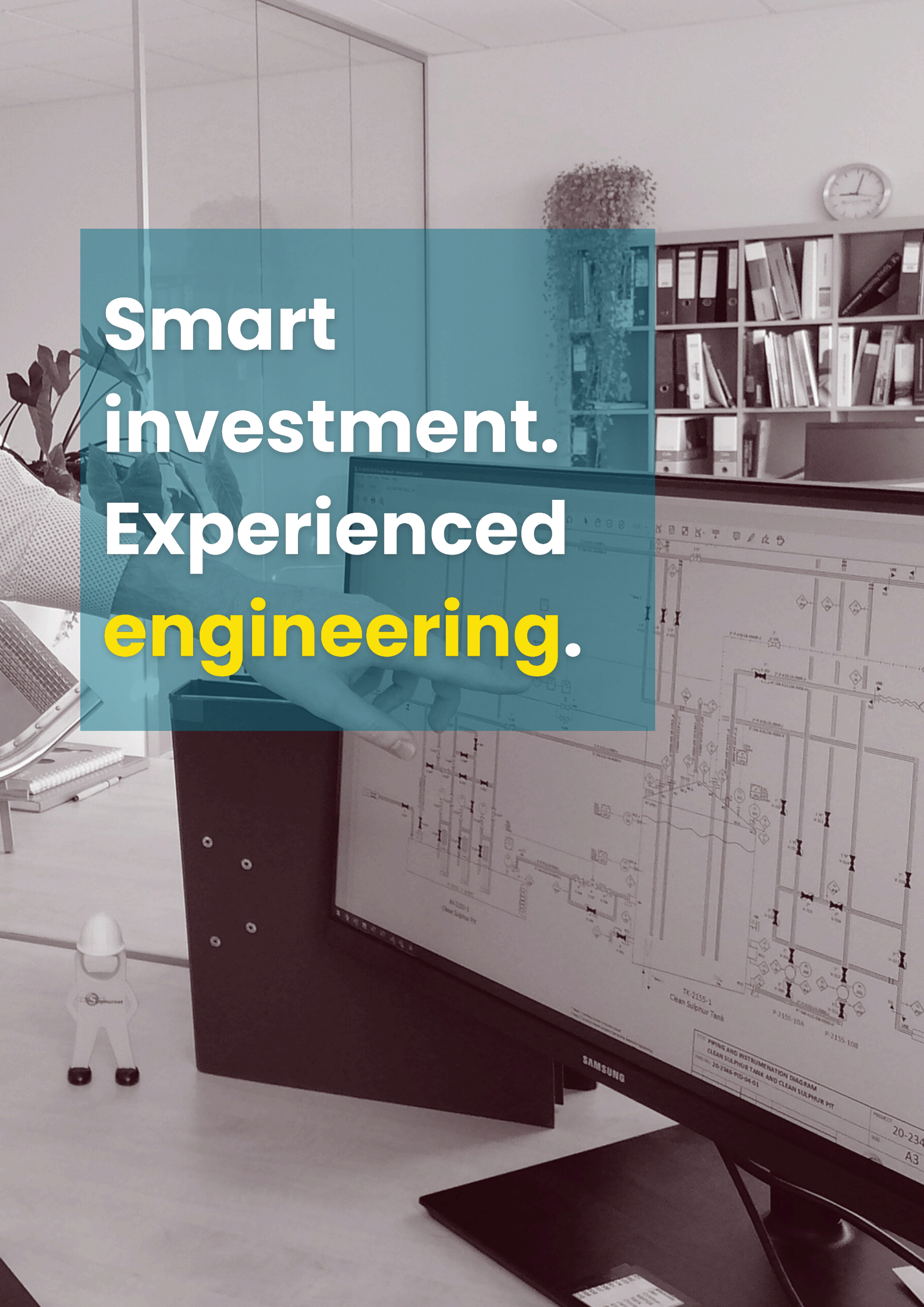


## Customization and Compatibility

At Sulphurnet, we provide custom-designed filter leaves compatible with all major filter brands. Whether you need new filter leaves or cost-effective rescreening and repairs, we cater to brands including AMA, USF, Stockdale, LFC, MAHLE, Autojet, Sparkler Filter, Durco, Industrial Filter, US Filter, and more.

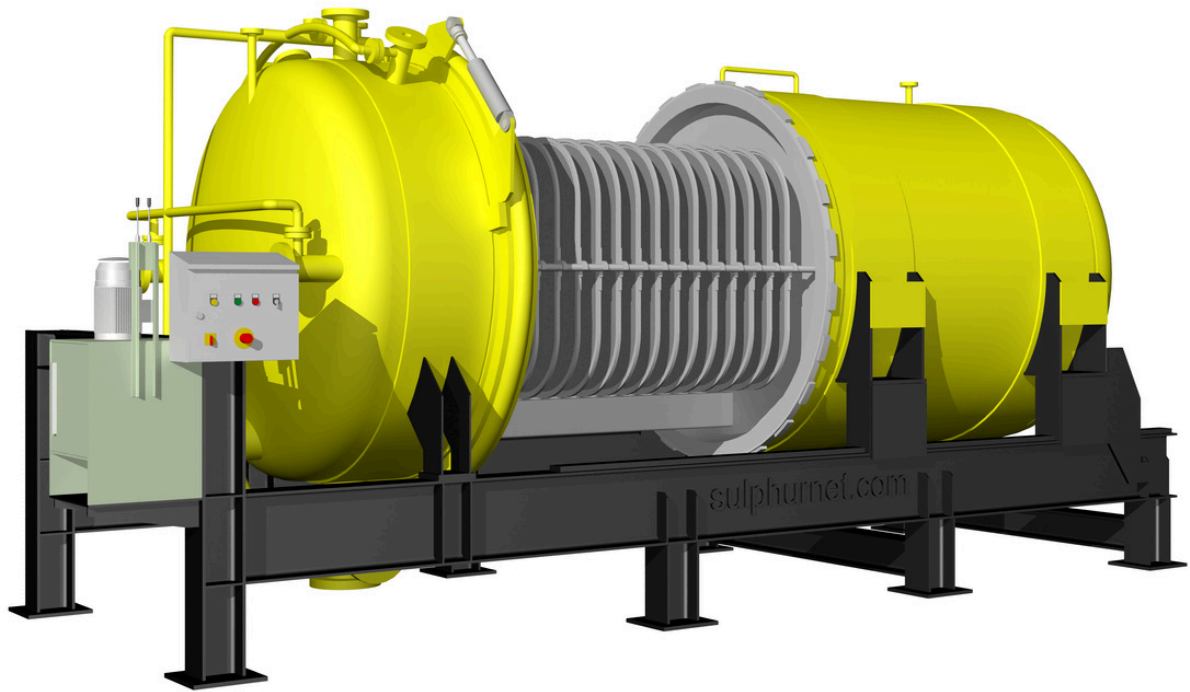






**Smart  
investment.  
Experienced  
engineering.**

The background image shows a professional office environment. A hand is pointing at a Samsung monitor that displays a detailed P&ID for a 'Clean Sulphur Tank'. The diagram includes various process symbols, flow lines, and labels such as 'TK-2155-1 Clean Sulphur Tank', 'P-2155-10A', and 'P-2155-10B'. A title block in the bottom right corner identifies the drawing as a 'PIPELINE AND INSTRUMENTATION DIAGRAM' for 'CLEAN SULPHUR TANK AND CLEAN SULPHUR PPT', with project number '20-2346-PID-04-01'. The office also features a bookshelf with binders, a clock, and a small white figurine of a person in a hard hat on the desk.



## Material Options

We offer filter leaves constructed from a variety of high-quality materials, tailored to meet the demands of different filtration processes:

- Carbon Steel
- Stainless Steel 304
- Stainless Steel 316L
- Stainless Steel 316 NSCD
- 904L Stainless Steel
- PP or PVDF-based
- Other Plastics

The selection of materials and construction types depends on factors such as the filtered material, filtration rate, solid type, and pressure drop requirements.



# Why Choose Sulphurnet Filter Leaves?

## **Leakage-Free Sealing:**

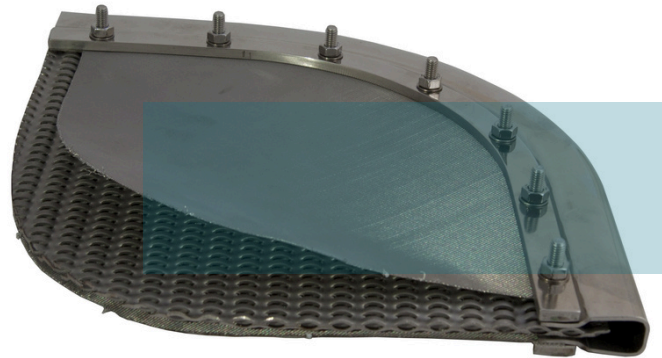
Ensures reliable filtration performance.

**Robust Design:** Extra strong frames with 25% more material.

**Construction Options:** Available in both riveted and bolted styles.

**Long Service Life:** Filter leaves can last up to 20 years.

**Heavy-Duty Construction:** Fully welded perforated sheets for free drainage and low-pressure drop.



---



**More than 150 clients in  
more than 45 countries.**

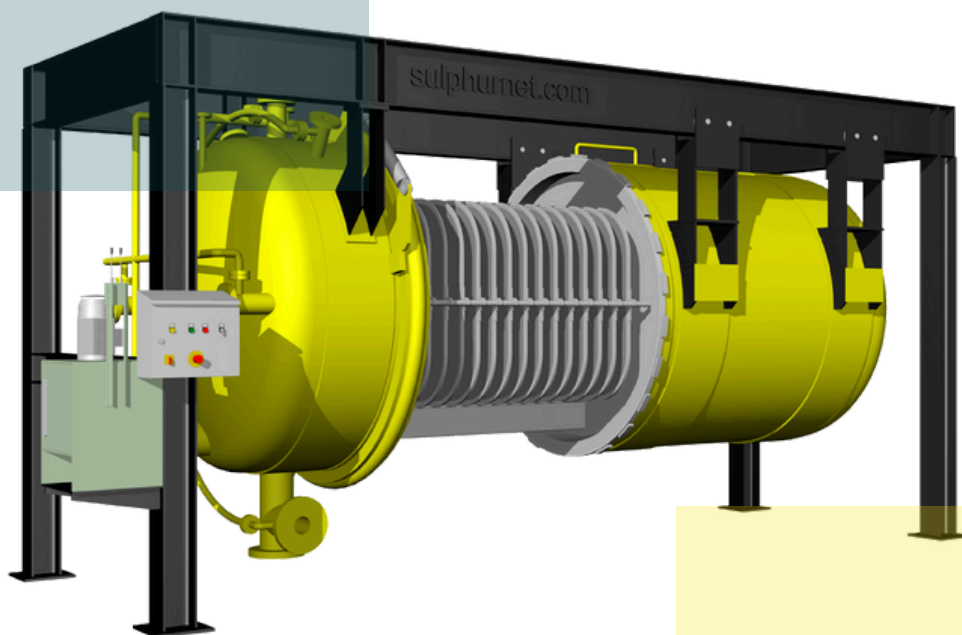


# **Elevate Your Process: Superior Filtration for Liquid Sulphur**

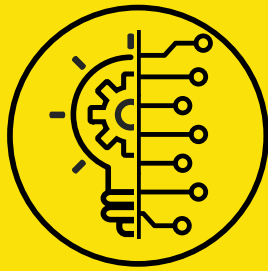
# Custom solutions

Investing in the right filtration solution is crucial for efficient operations and cost management. Consulting with experts to design custom-made filter leaves ensures your filtration system is perfectly suited to your specific needs, preventing costly mistakes and enhancing performance.

Don't compromise with one-size-fits-all solutions; let precision-crafted, tailored filter leaves drive your success and save you from unnecessary expenses.







## INNOVATION

We embrace new technologies to revolutionize filtration plants, ensuring our clients benefit from the latest advancements.



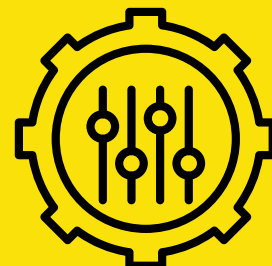
## EXPERIENCE

With over 50 years of combined experience in sulphur melting and filtration technology, we provide reliable solutions backed by a proven track record, ensuring excellence and trust in every project we undertake.



## DEDICATION

We are committed to reducing production costs, improving quality, and enhancing safety and environmental performance for our clients worldwide.



## TAILOR MADE

We specialize in custom filtration systems tailored to each client's unique needs, ensuring optimal performance and seamless integration.

# GET IN TOUCH TODAY

Sulphurnet offers an **all-in-one design package** that covers every stage of your project for sulphur processing plants, from the initial kick-off meeting to post-completion after-sales support.

We are dedicated to **more than just filtration systems**; our mission is to help customers worldwide **reduce** production costs, **enhance** product quality and yields, and **improve** Safety, Health, and Environmental performance.

## Contact us:



[www.sulphurnet.com](http://www.sulphurnet.com)



[info@sulphurnet.com](mailto:info@sulphurnet.com)



+31 345 476 627



Pascalweg 5-14  
4104 BE Culemborg  
The Netherlands



IS IT  
**COMPLEX?**  
WE MAKE IT  
**SIMPLE.**





GET IT RIGHT THE  
FIRST TIME



TK-001  
Clean Sulphur Tank